



RESEARCH & TECHNOLOGY DEPARTMENT

# HLPW6 – TC 1

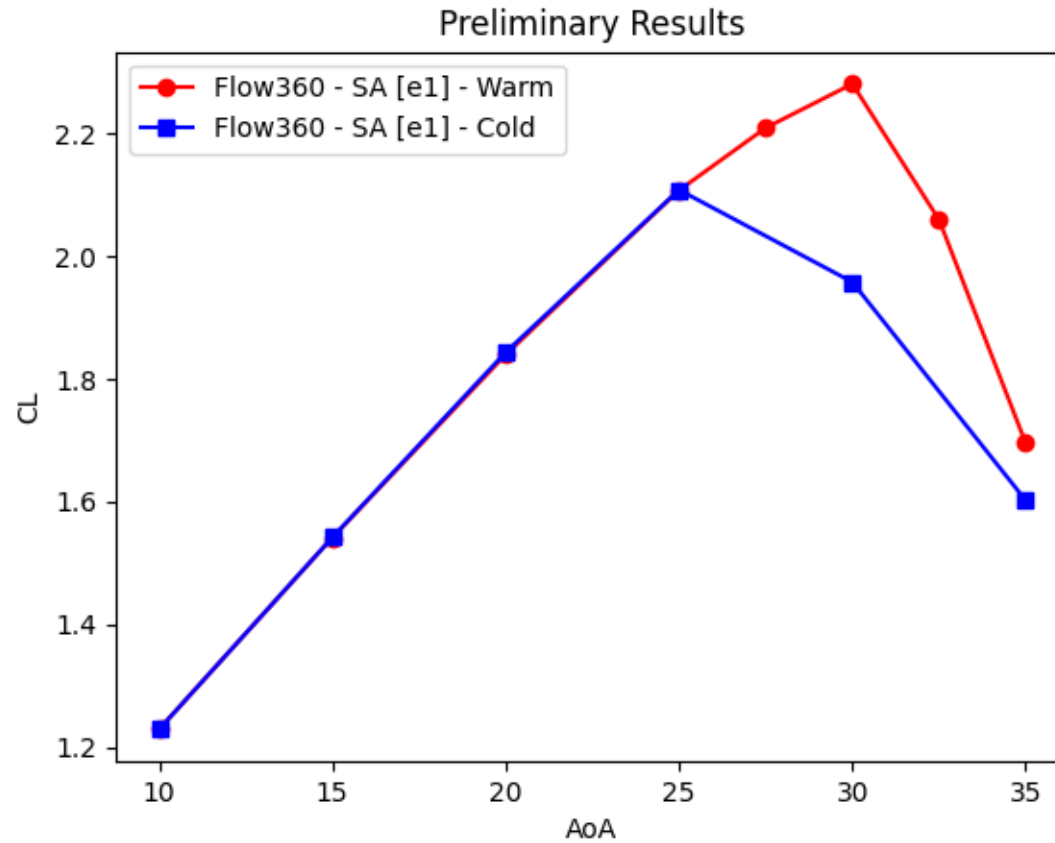
GTX//AIR/  
10/03/2026



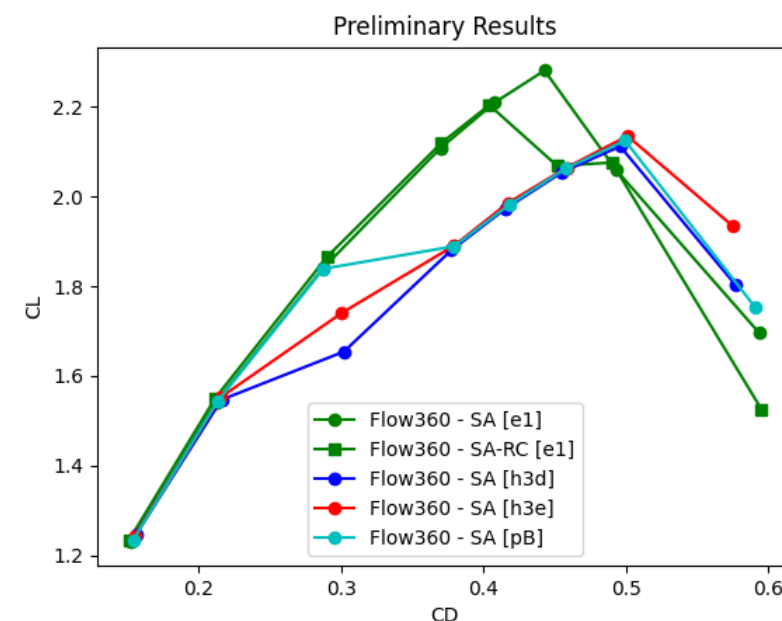
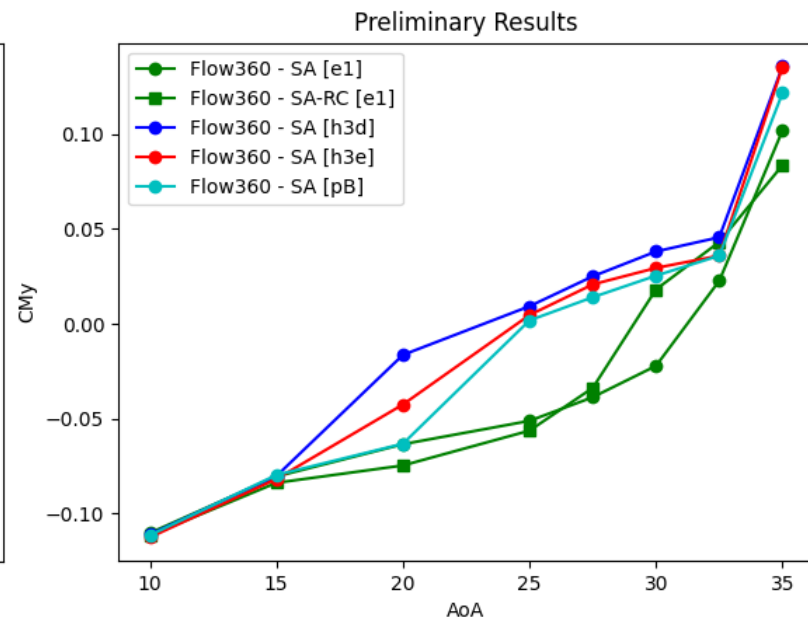
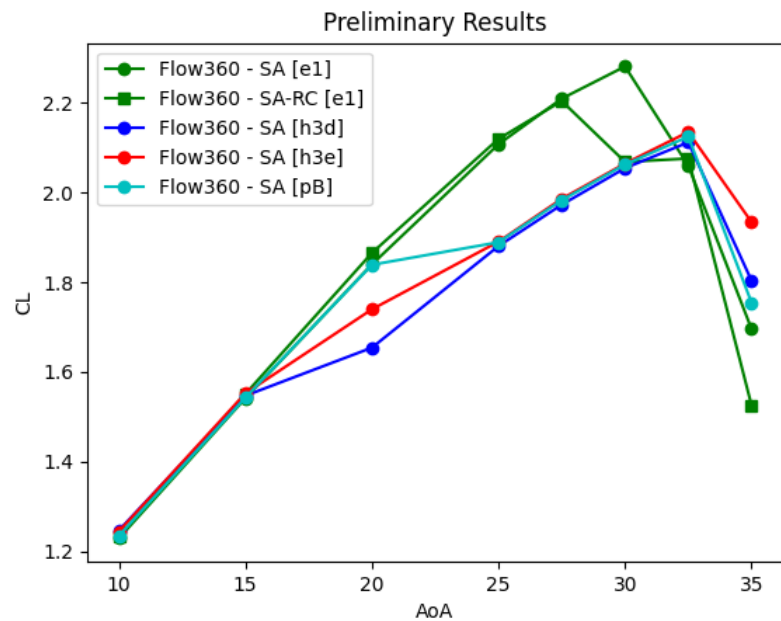
# PRELIMINARY RESULTS



- All the following simulations were **warm-started**.
- **Flow360** uses SA-Neg as the default. All plots are SA-Neg not SA.



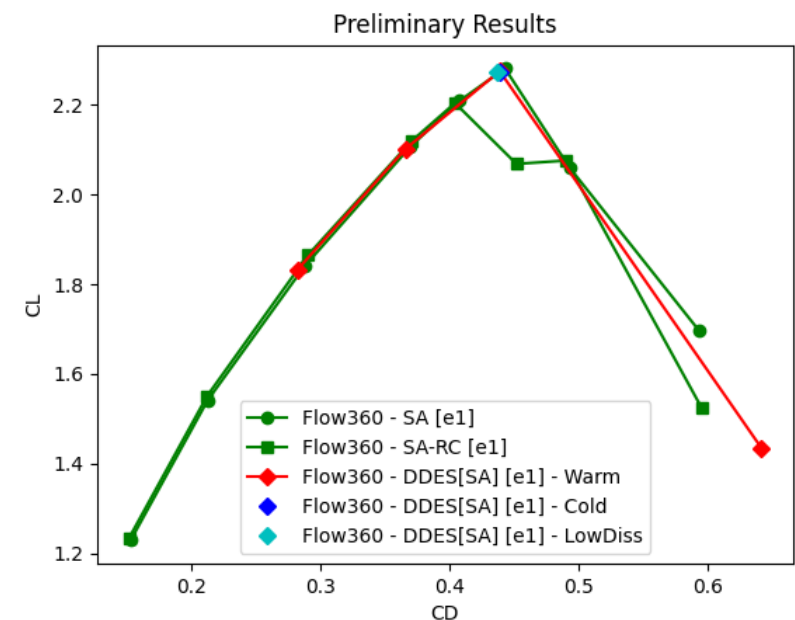
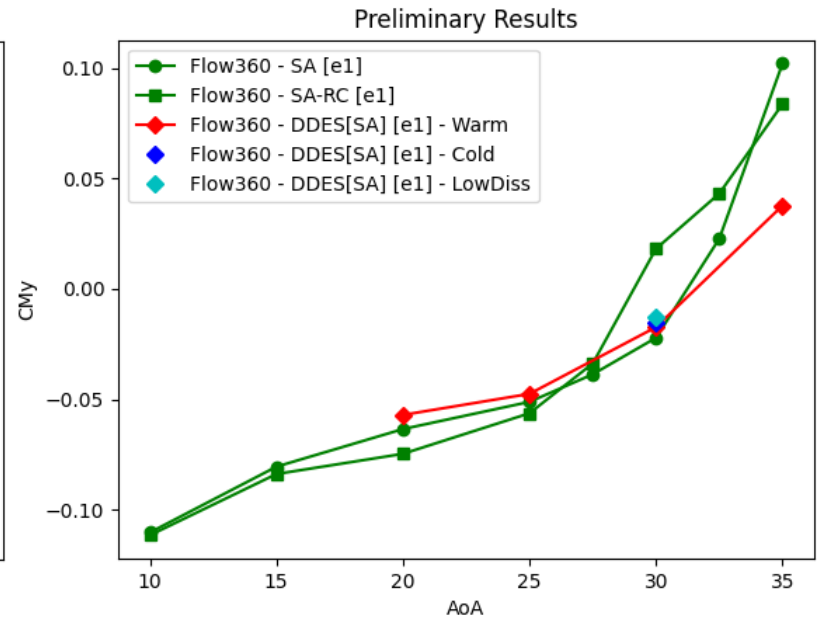
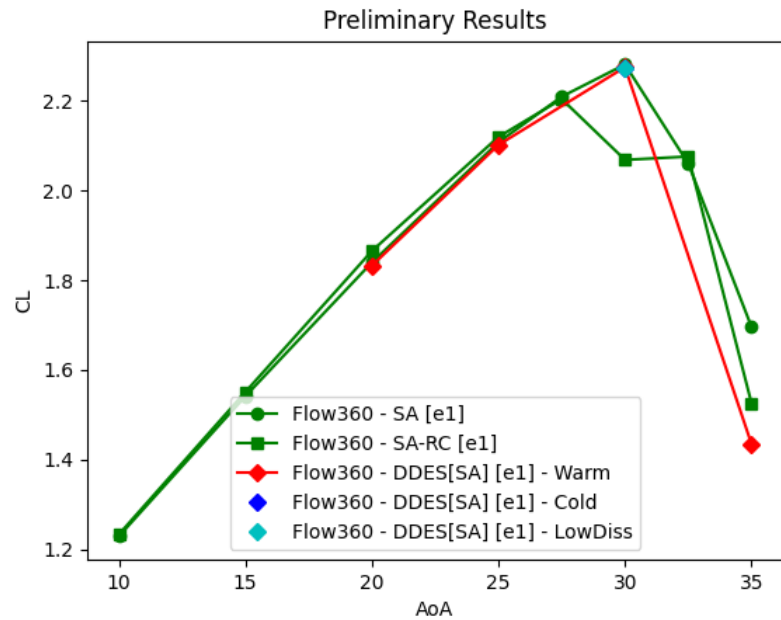
# PRELIMINARY RESULTS



	e1	pB	h3e	h3d
nNodes	6,099E+07	2,829E+07	5,797E+07	1,802E+07

CONFIDENTIAL INFORMATION / This information belongs to Embraer and cannot be used or reproduced without written permission from the Company.

# PRELIMINARY RESULTS



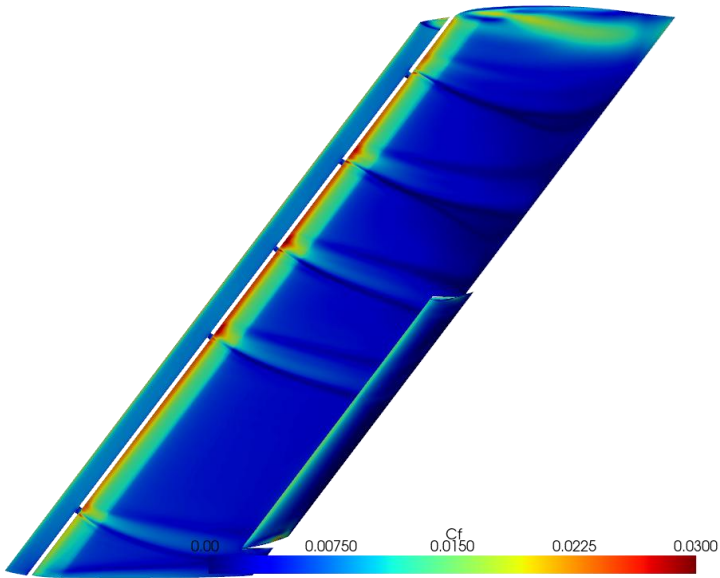
CONFIDENTIAL INFORMATION / This information belongs to Embraer and cannot be used or reproduced without written permission from the Company.

# PRELIMINARY RESULTS

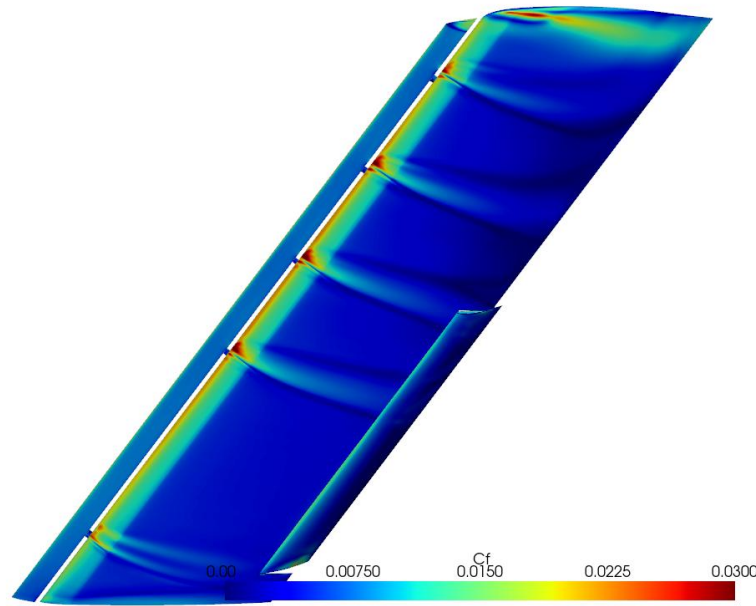


AoA = 25°

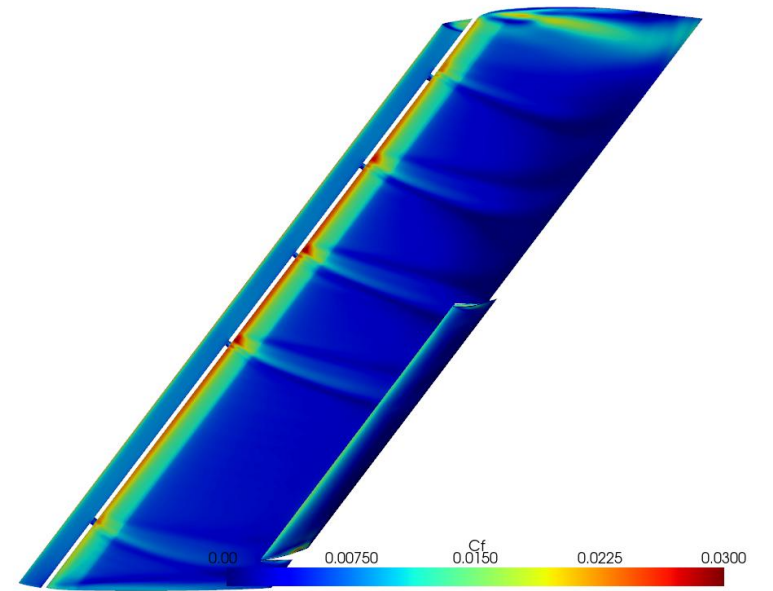
RANS-SA [e1]



RANS-SARC[e1]



DDES-SA [e1]



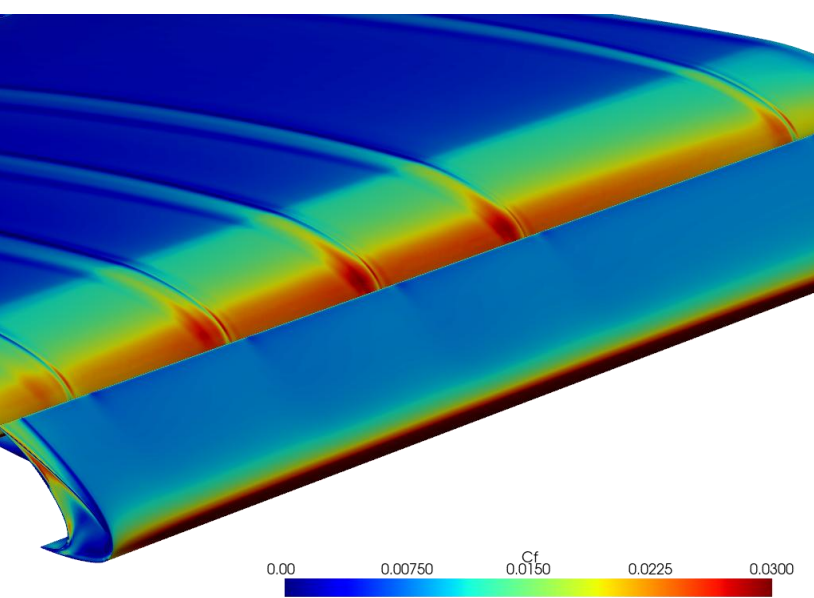
CONFIDENTIAL INFORMATION / This information belongs to Embraer and cannot be used or reproduced without written permission from the Company.

# PRELIMINARY RESULTS

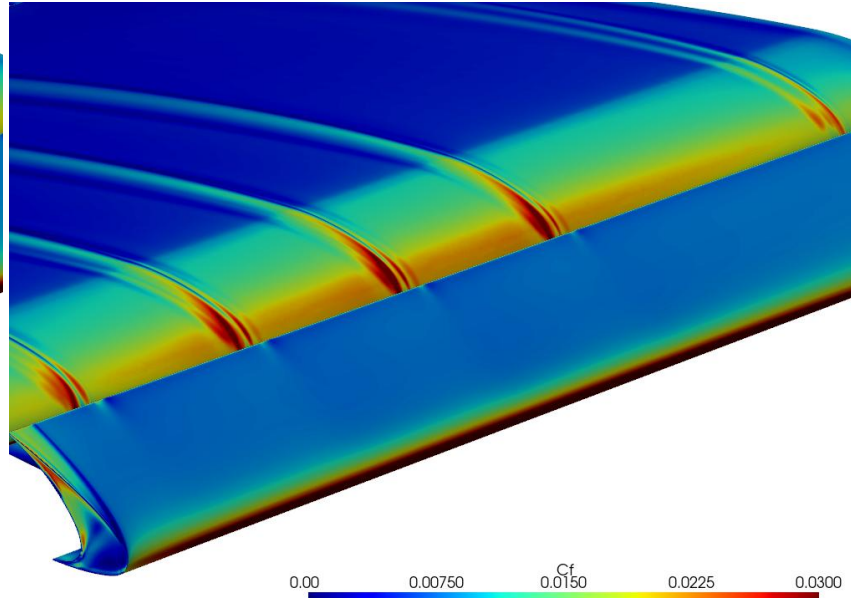


AoA = 25°

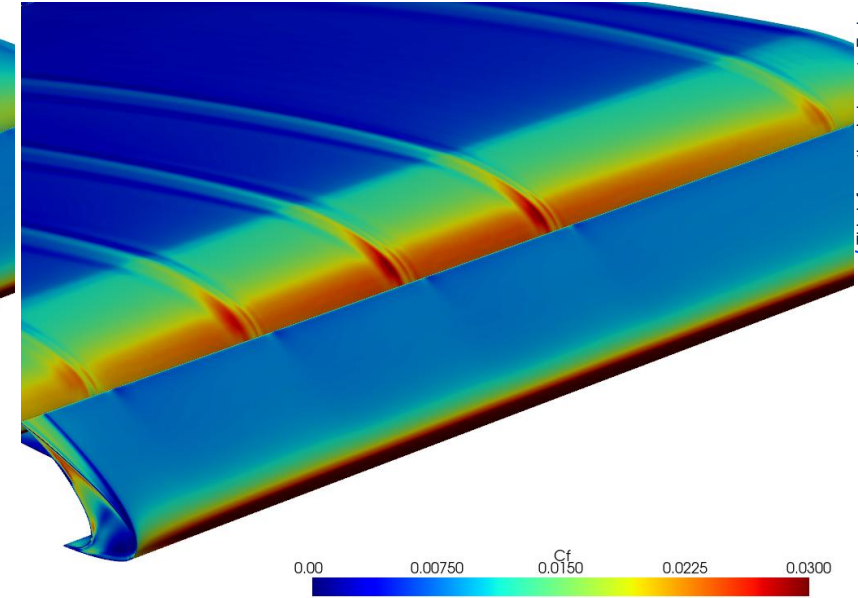
RANS-SA [e1]



RANS-SARC[e1]



DDES-SA [e1]



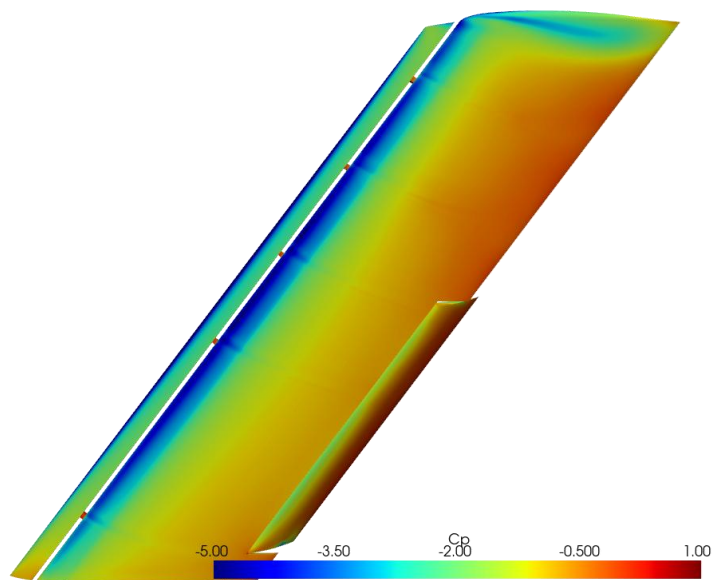
CONFIDENTIAL INFORMATION / This information belongs to Embraer and cannot be used or reproduced without written permission from the Company.

# PRELIMINARY RESULTS

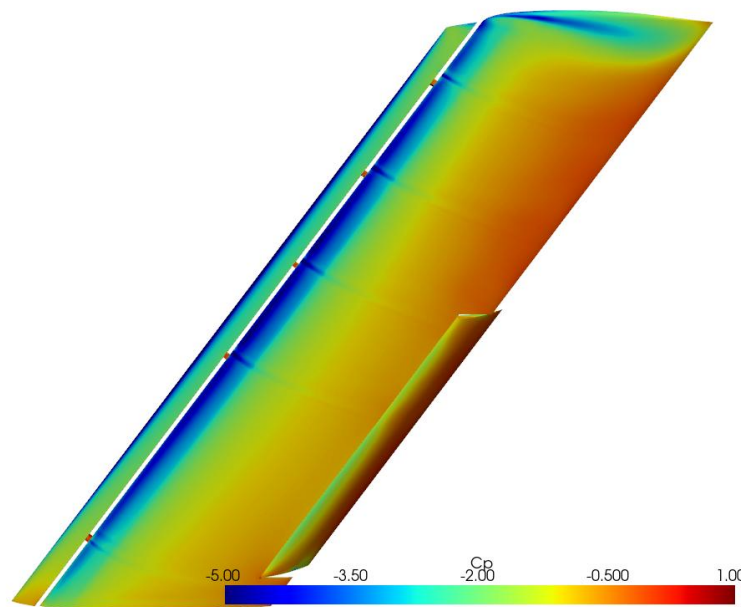


AoA = 25°

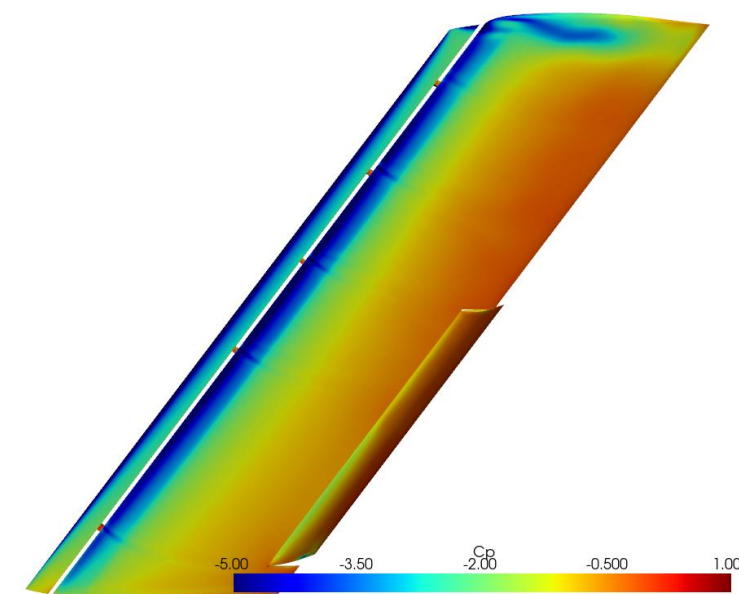
RANS-SA [e1]



RANS-SARC[e1]



DDES-SA [e1]



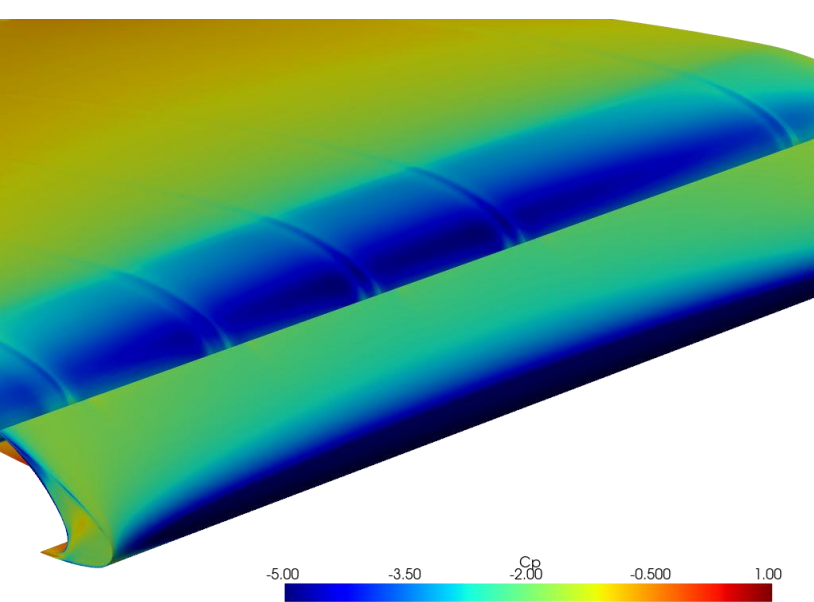
CONFIDENTIAL INFORMATION / This information belongs to Embraer and cannot be used or reproduced without written permission from the Company.

# PRELIMINARY RESULTS

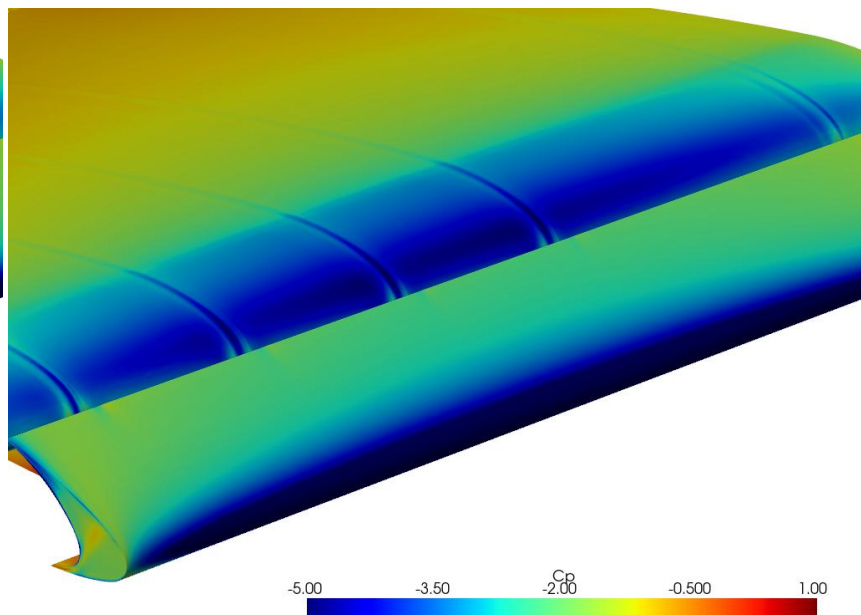


AoA = 25°

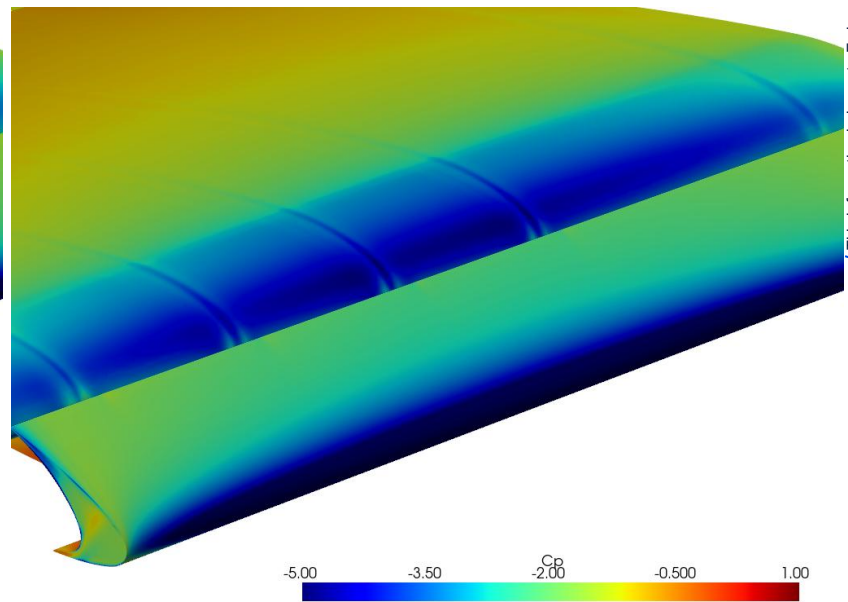
RANS-SA [e1]



RANS-SARC[e1]



DDES-SA [e1]



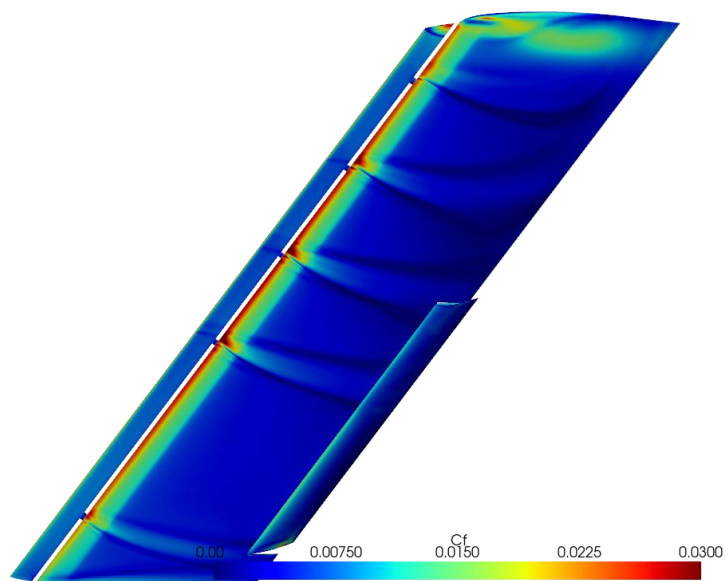
CONFIDENTIAL INFORMATION / This information belongs to Embraer and cannot be used or reproduced without written permission from the Company.

# PRELIMINARY RESULTS

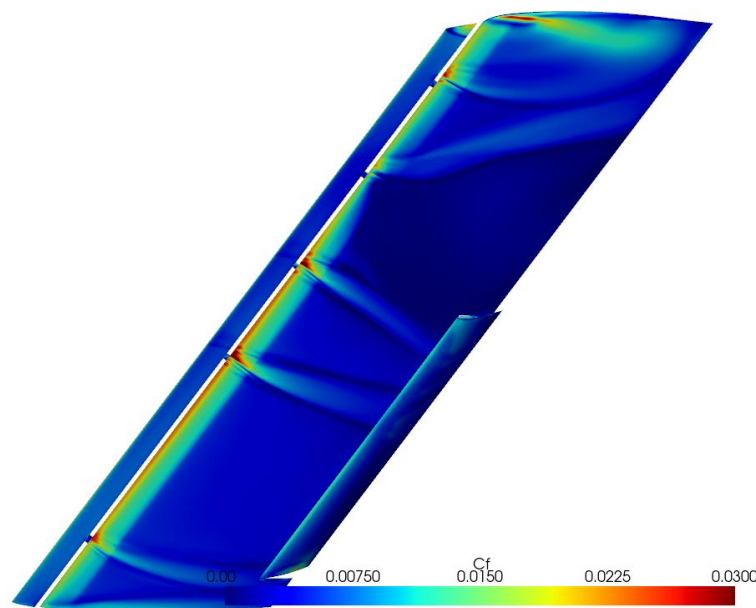


AoA = 30°

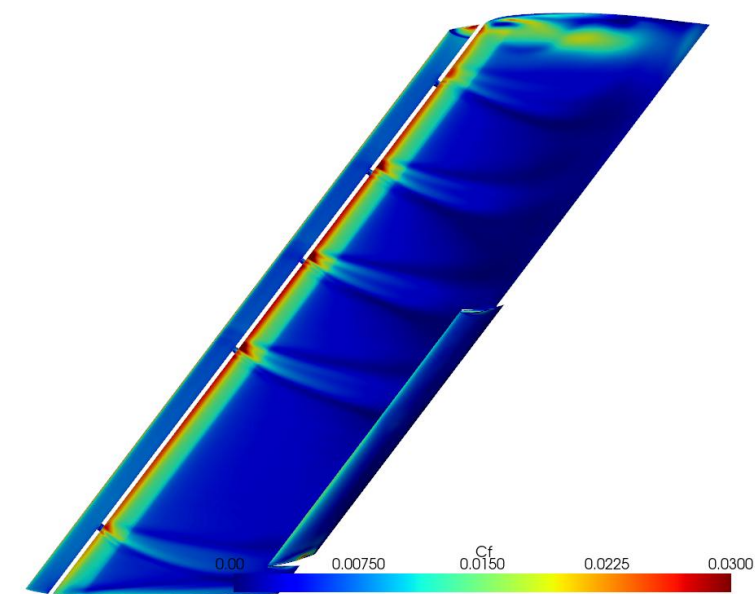
RANS-SA [e1]



RANS-SARC[e1]



DDES-SA [e1]



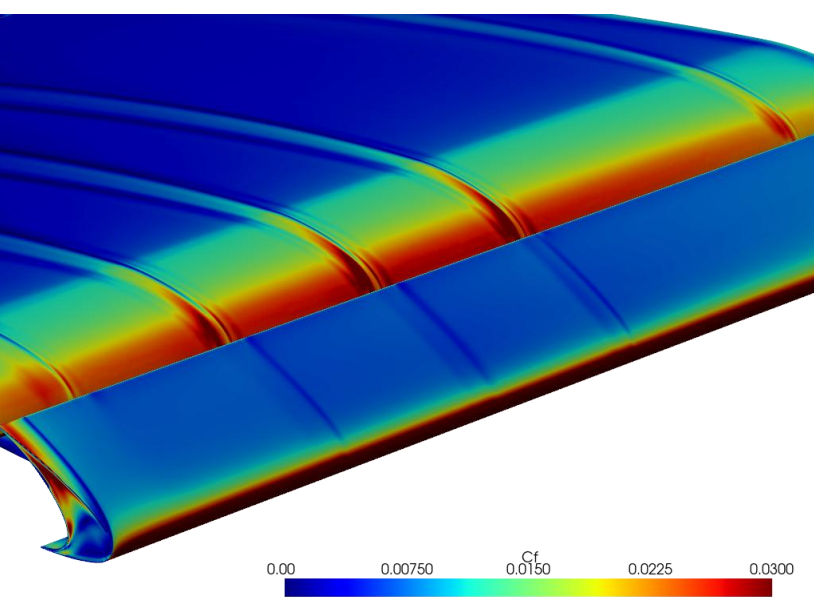
CONFIDENTIAL INFORMATION / This information belongs to Embraer and cannot be used or reproduced without written permission from the Company.

# PRELIMINARY RESULTS

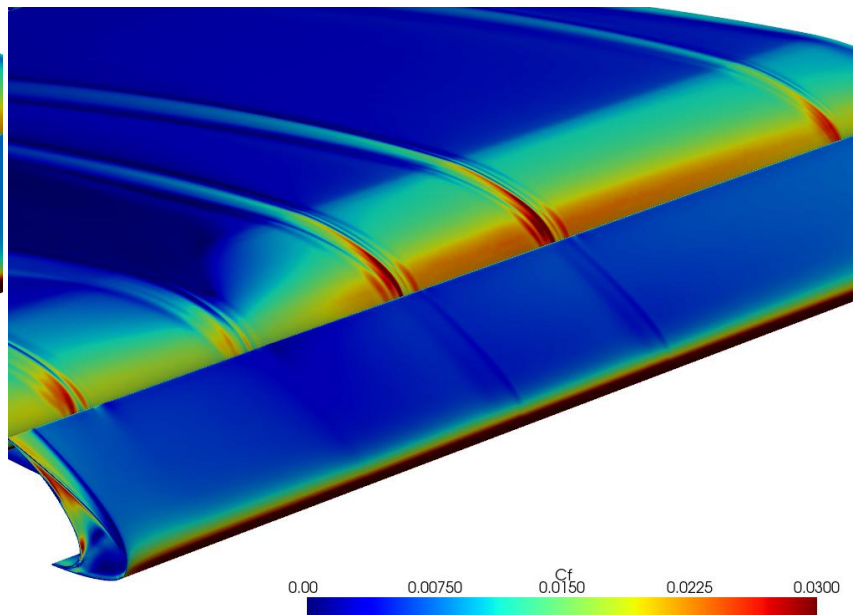


AoA = 30°

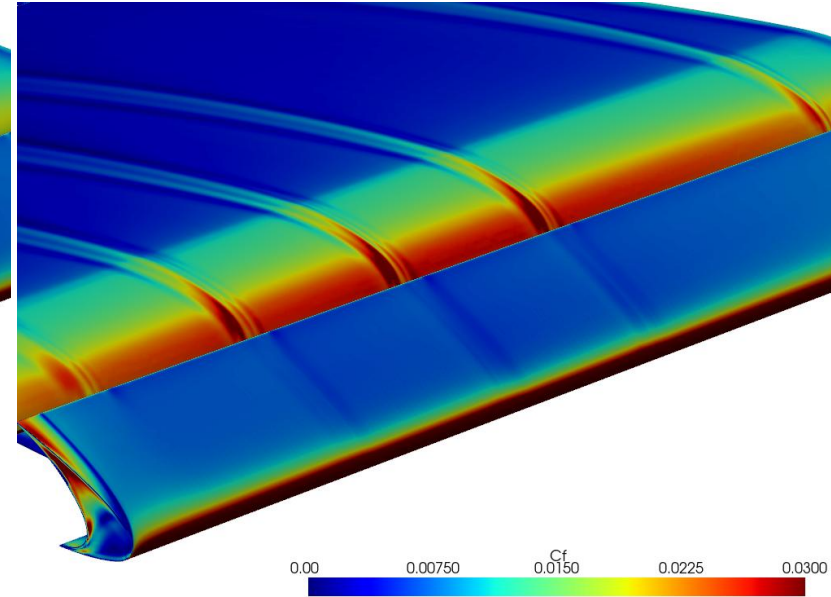
RANS-SA [e1]



RANS-SARC[e1]



DDES-SA [e1]



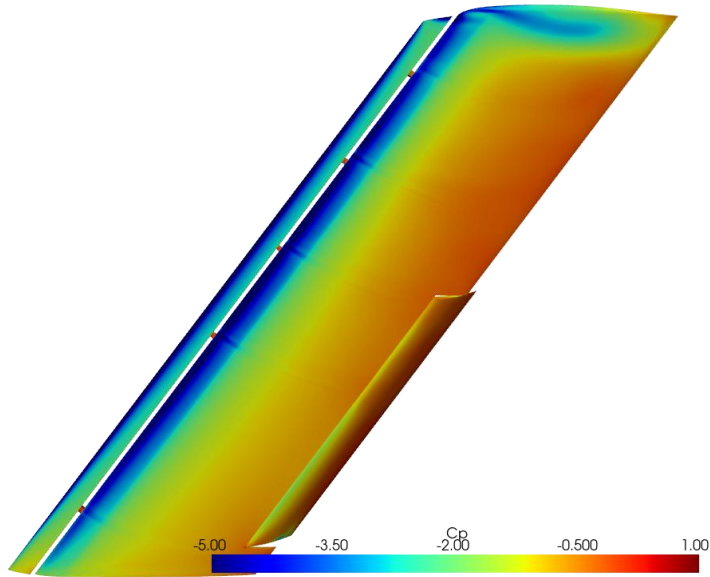
CONFIDENTIAL INFORMATION / This information belongs to Embraer and cannot be used or reproduced without written permission from the Company.

# PRELIMINARY RESULTS

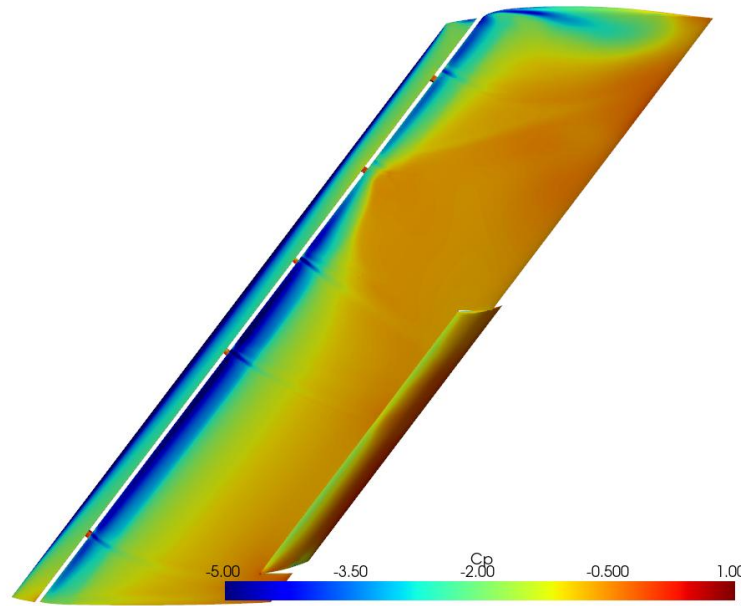


AoA = 30°

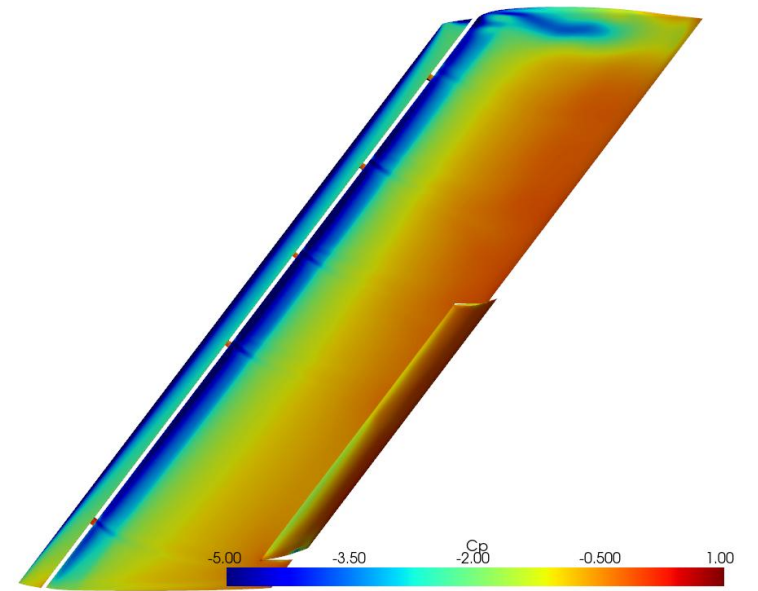
RANS-SA [e1]



RANS-SARC[e1]



DDES-SA [e1]



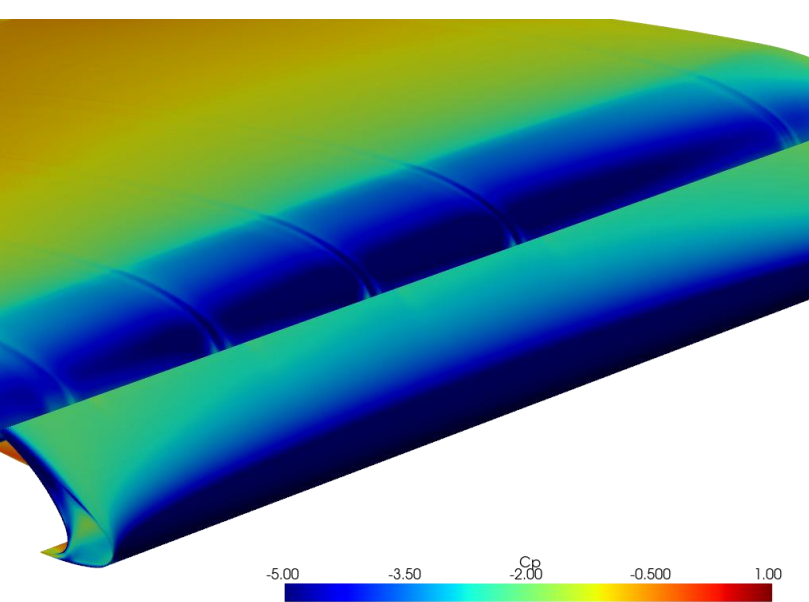
CONFIDENTIAL INFORMATION / This information belongs to Embraer and cannot be used or reproduced without written permission from the Company.

# PRELIMINARY RESULTS

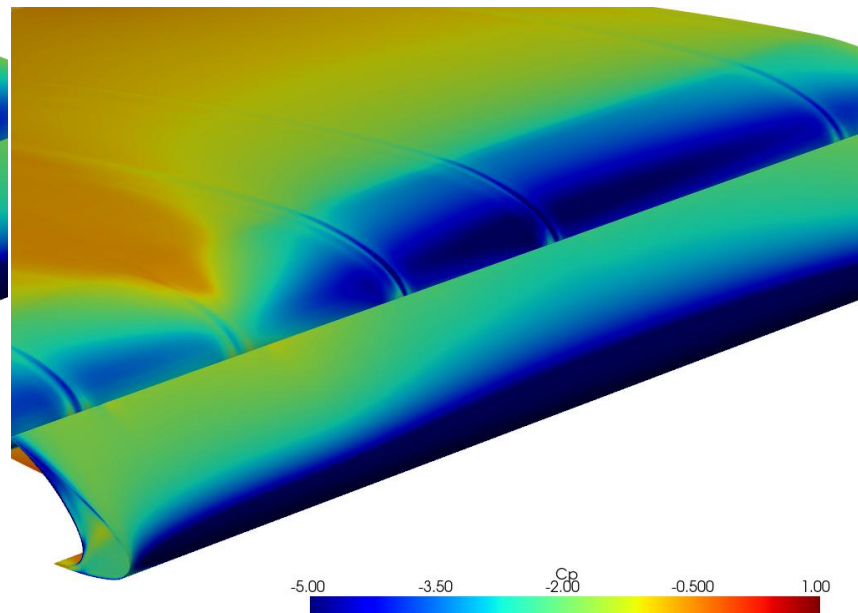


AoA = 30°

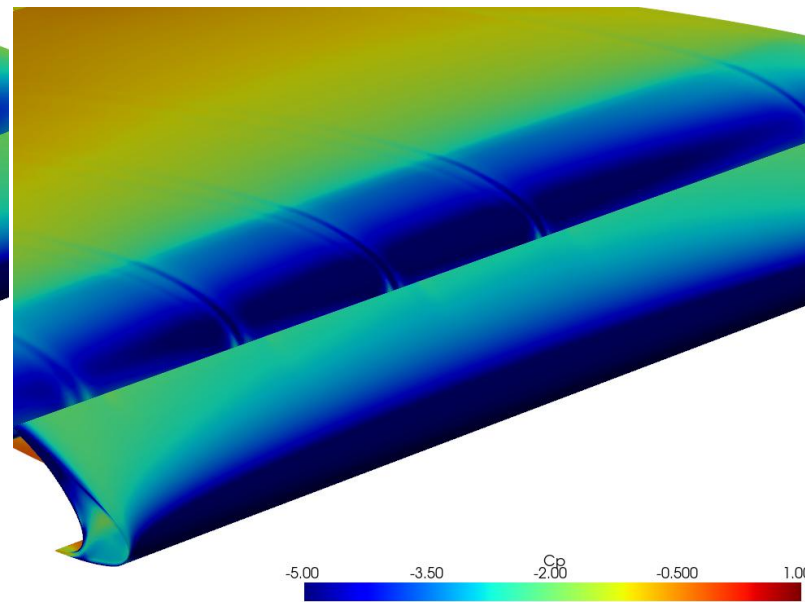
RANS-SA [e1]



RANS-SARC[e1]



DDES-SA [e1]



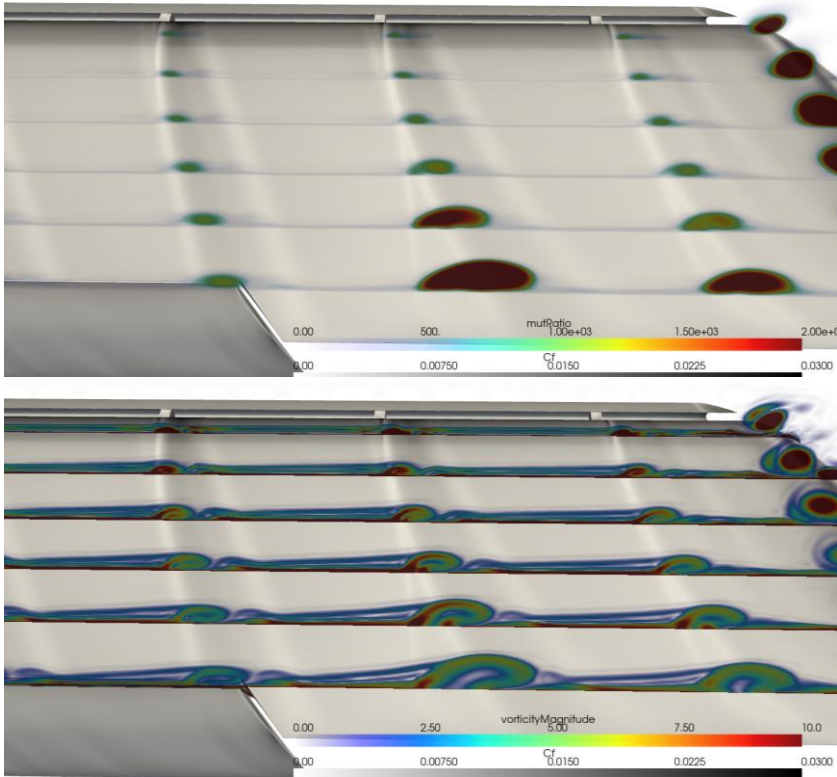
CONFIDENTIAL INFORMATION / This information belongs to Embraer and cannot be used or reproduced without written permission from the Company.

# PRELIMINARY RESULTS

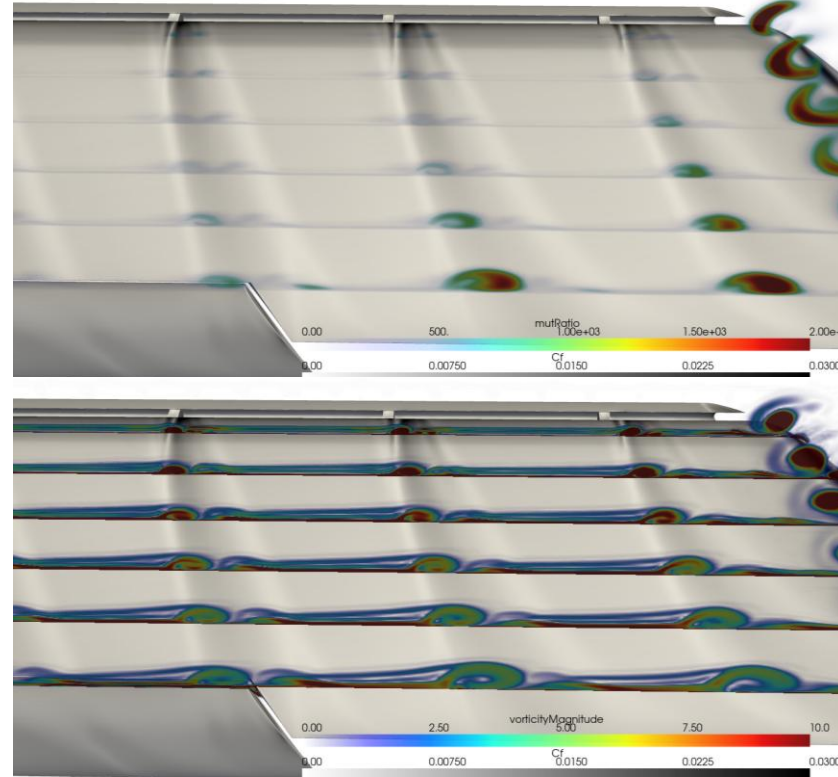


AoA = 25°

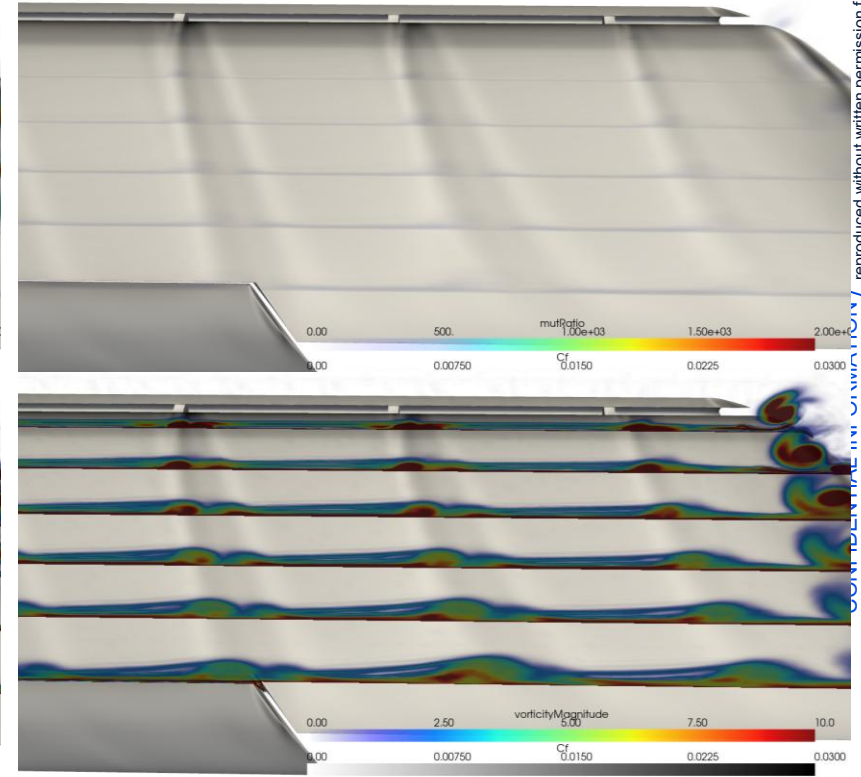
RANS-SA[e1]



RANS-SARC [e1]



DDES-SA [e1]



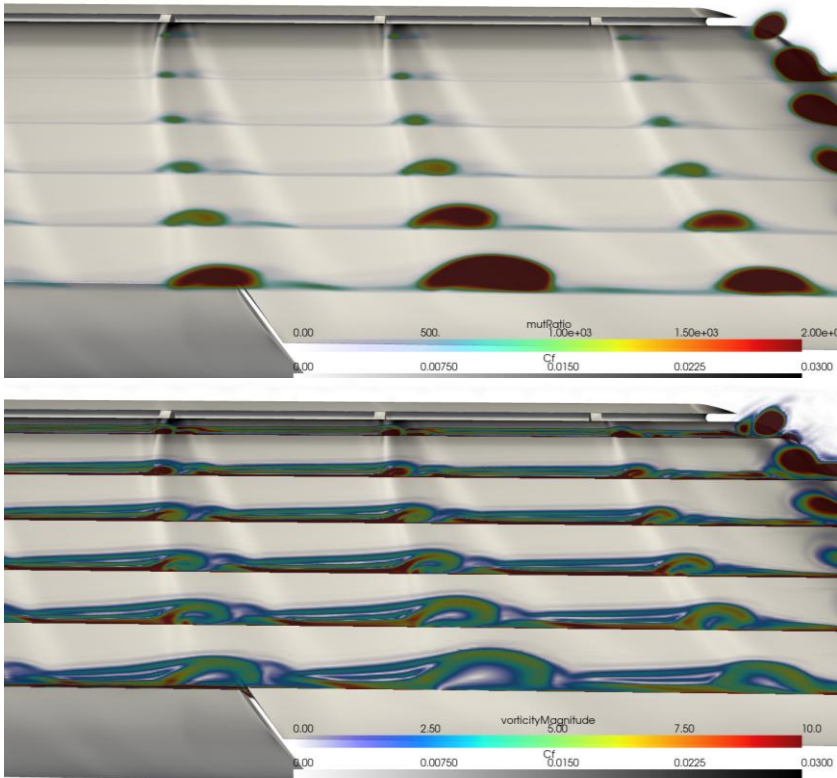
CONFIDENTIAL - NOT TO BE RELEASED OR REPRODUCED WITHOUT WRITTEN PERMISSION FROM THE COMPANY.

# PRELIMINARY RESULTS

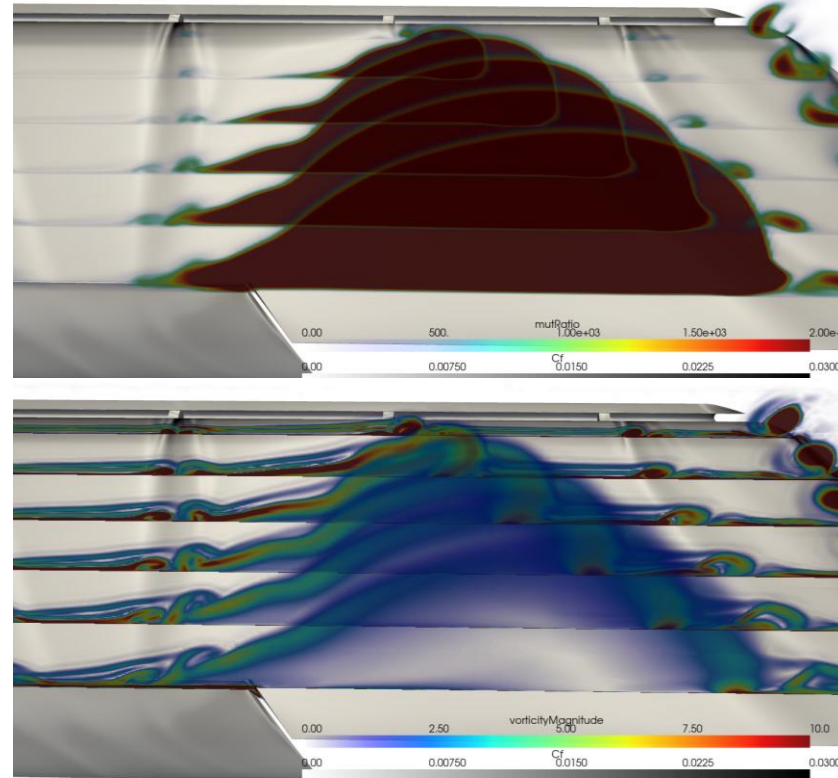


AoA = 30°

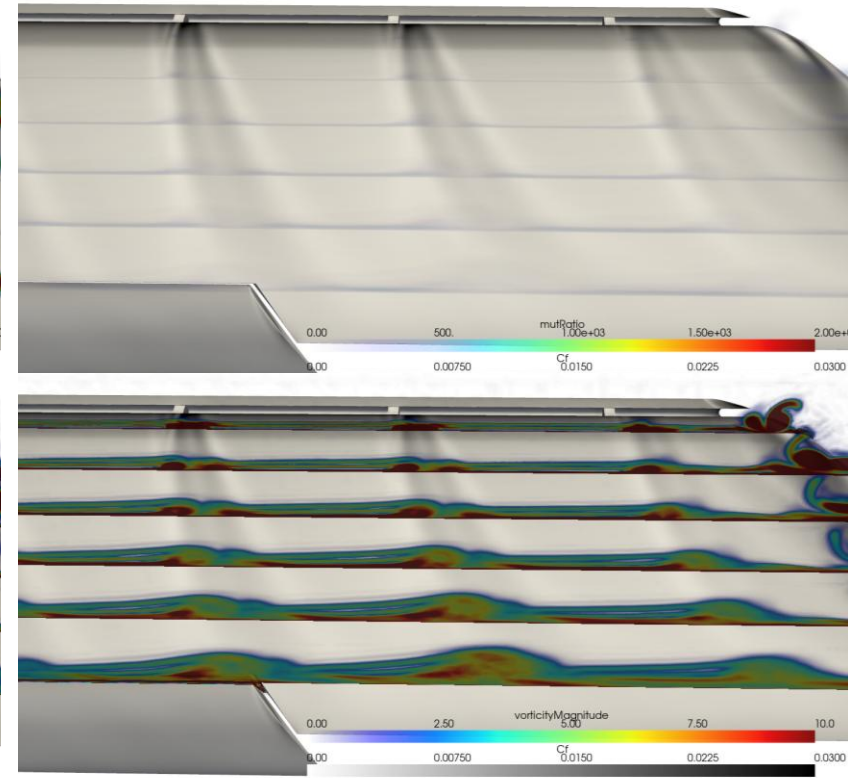
RANS-SA[e1]



RANS-SARC [e1]



DDES-SA [e1]



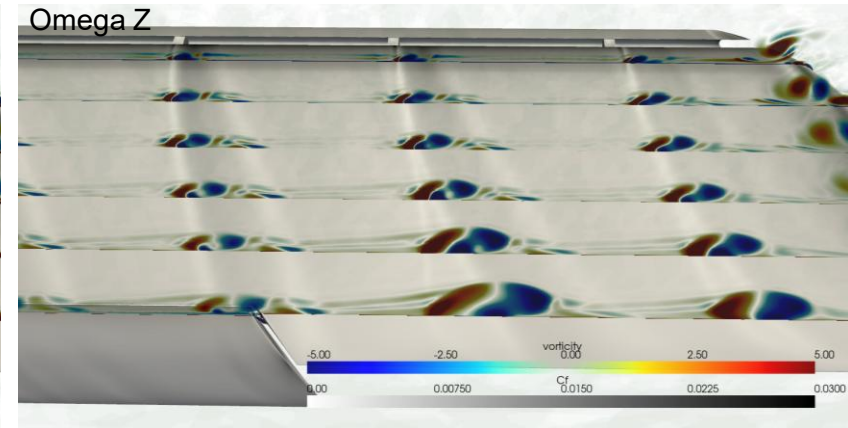
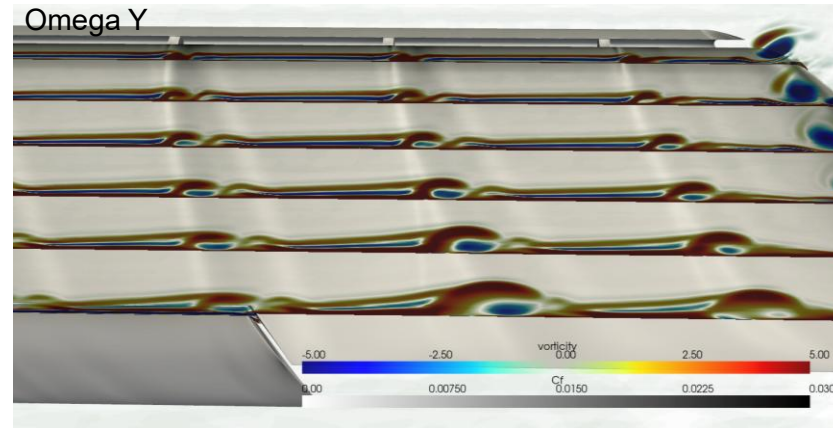
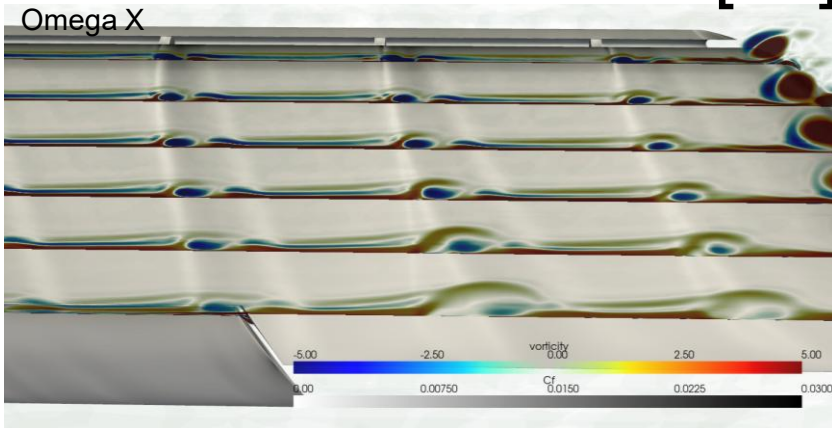
CONFIDENTIAL IN COMPLIANCE WITH EMBRAER'S POLICY. NOT TO BE USED OR REPRODUCED WITHOUT WRITTEN PERMISSION FROM THE COMPANY.

# PRELIMINARY RESULTS

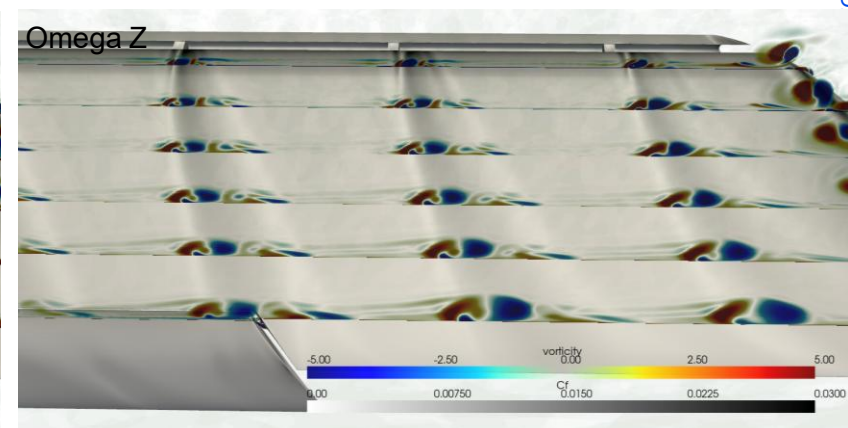
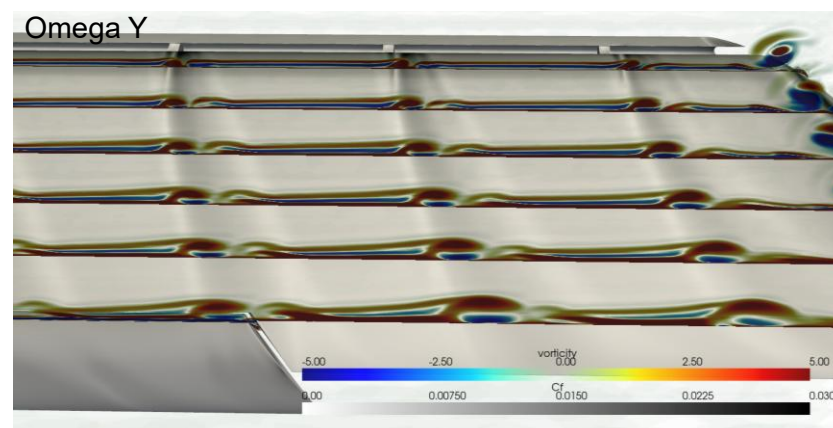
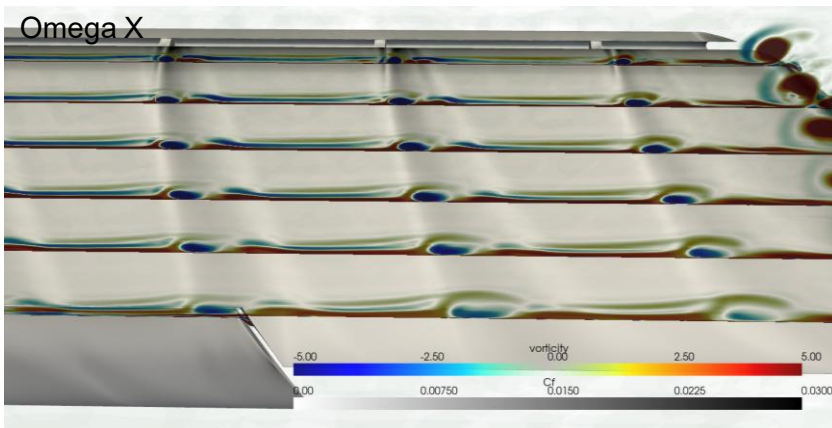


AoA = 25°

## RANS-SA[e1]



## RANS-SARC [e1]



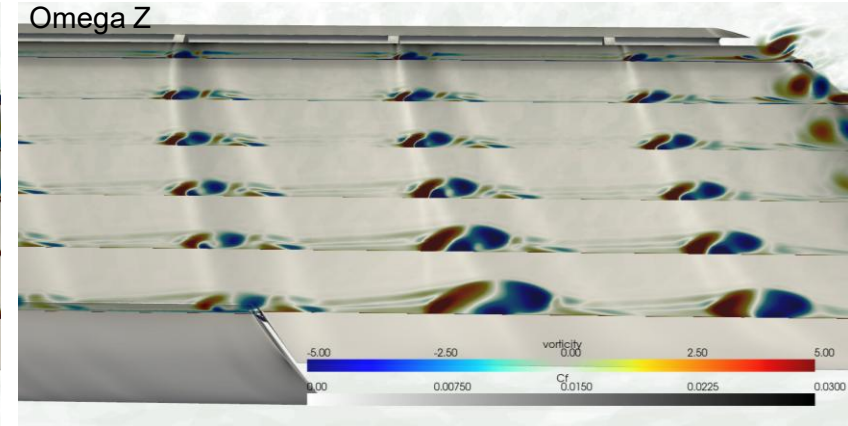
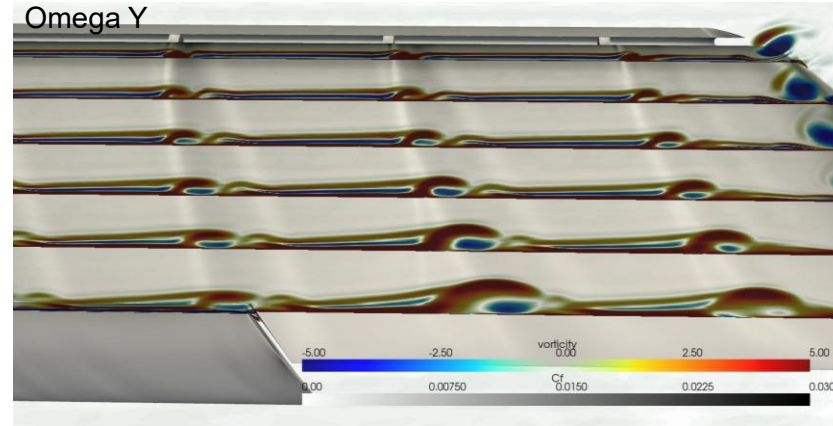
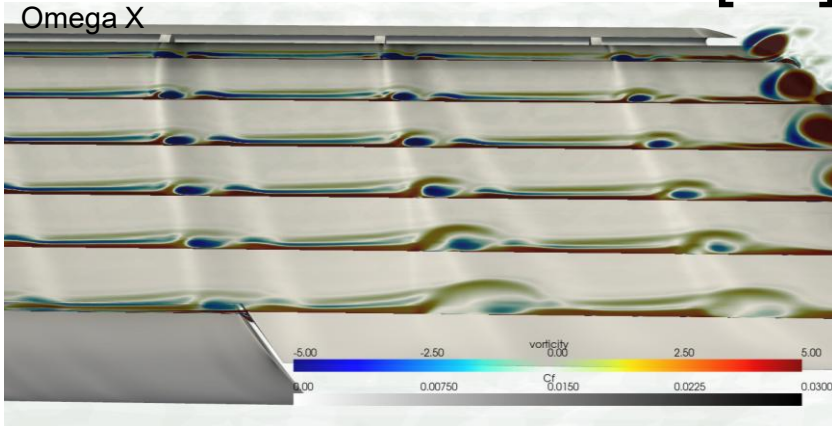
reproduced without written permission from the Company.

# PRELIMINARY RESULTS

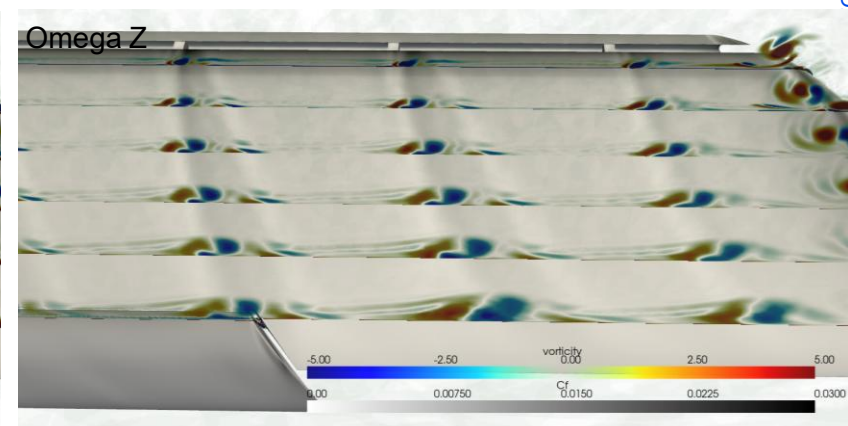
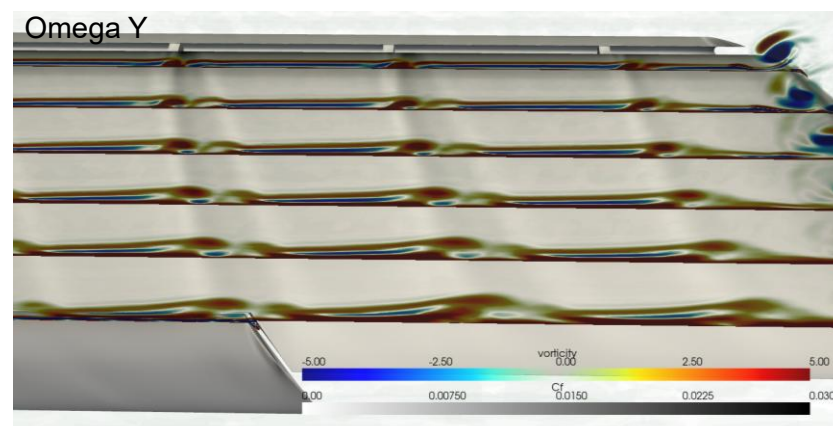
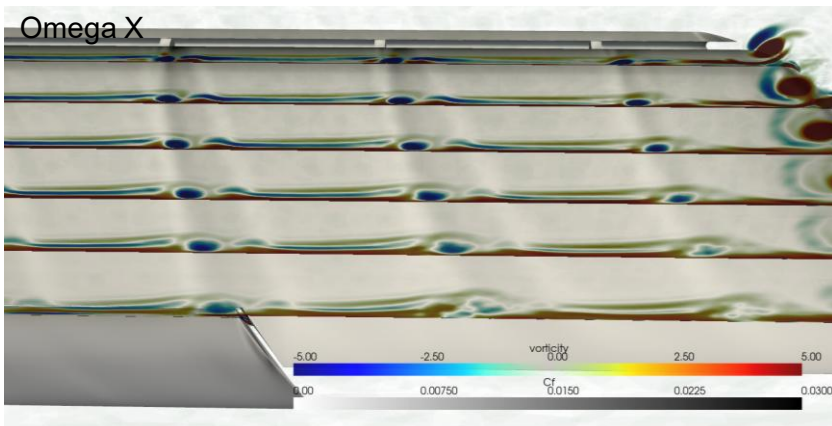


AoA = 25°

## RANS-SA[e1]



## DDES-SA [e1]

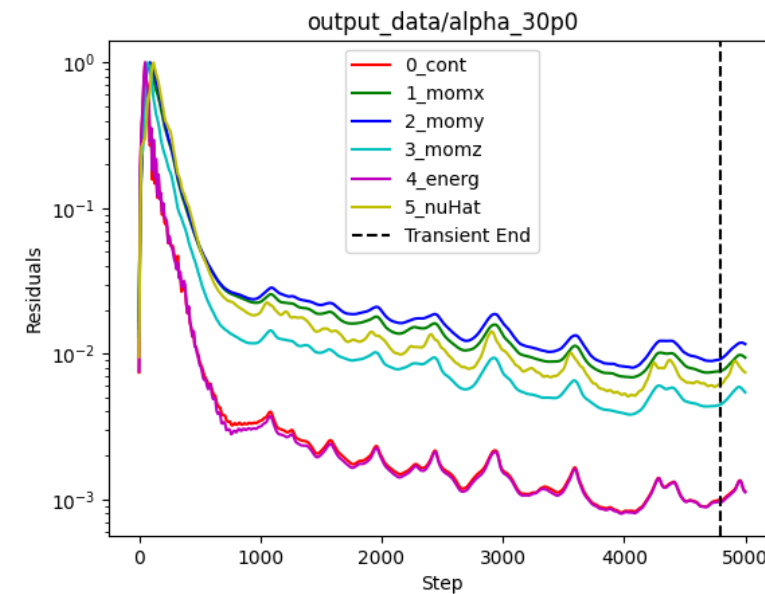
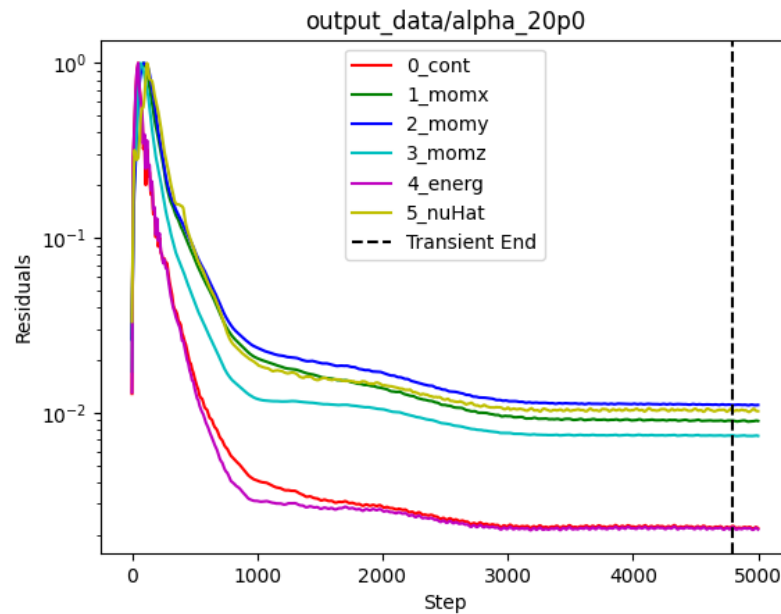
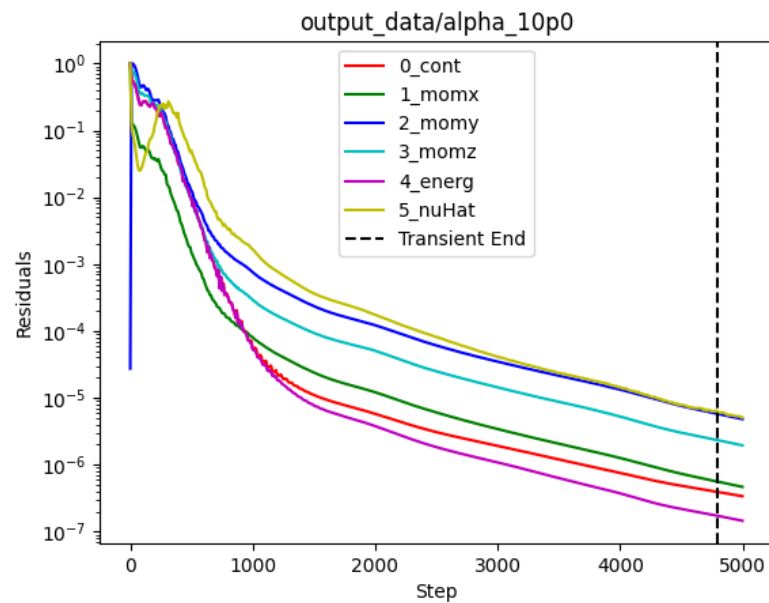


reproduced without written permission from the Company.

# PRELIMINARY RESULTS



## RANS-SA[e1]



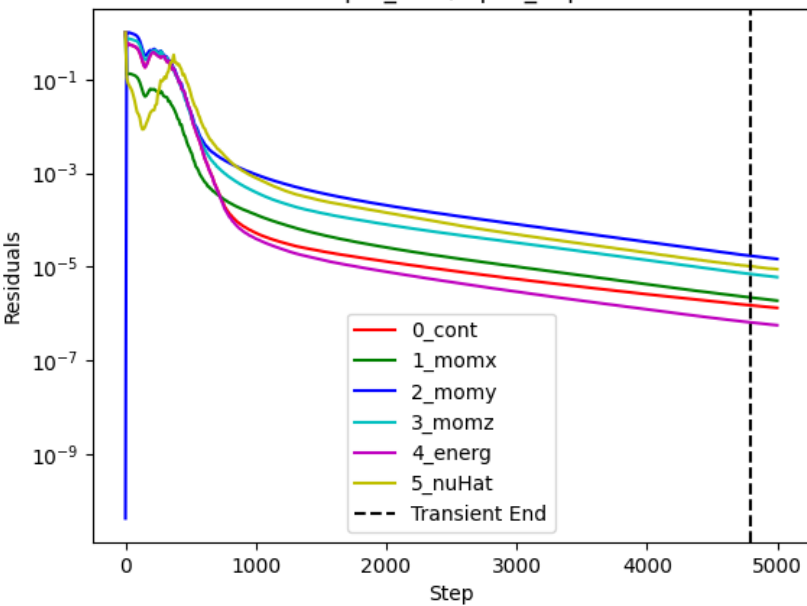
# PRELIMINARY RESULTS



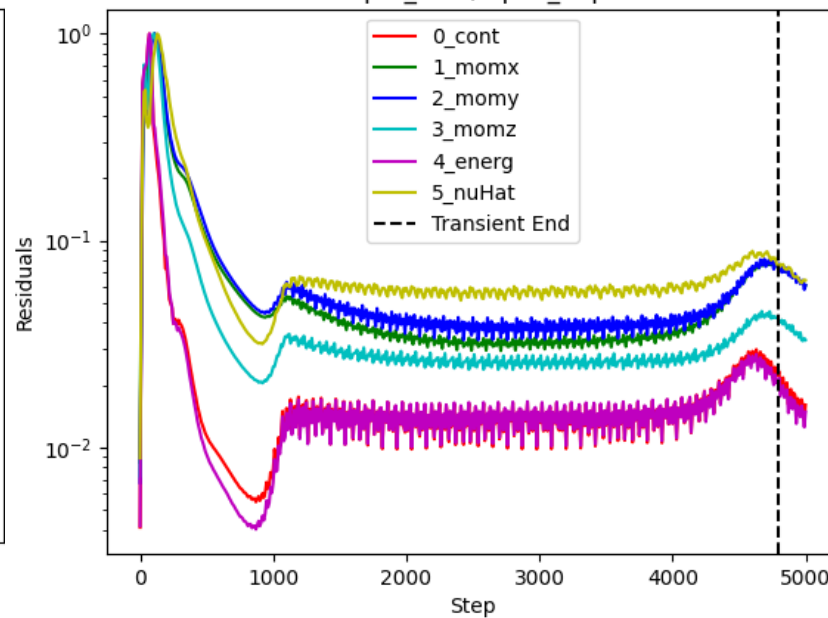
## RANS-SA[h3e1]

dor  
y.

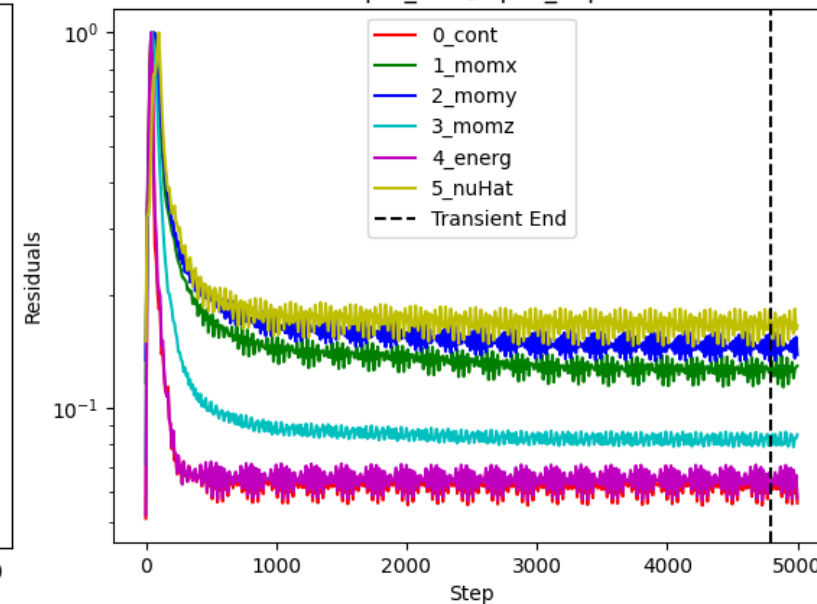
output\_data/alpha\_10p0



output\_data/alpha\_20p0



output\_data/alpha\_30p0



COI

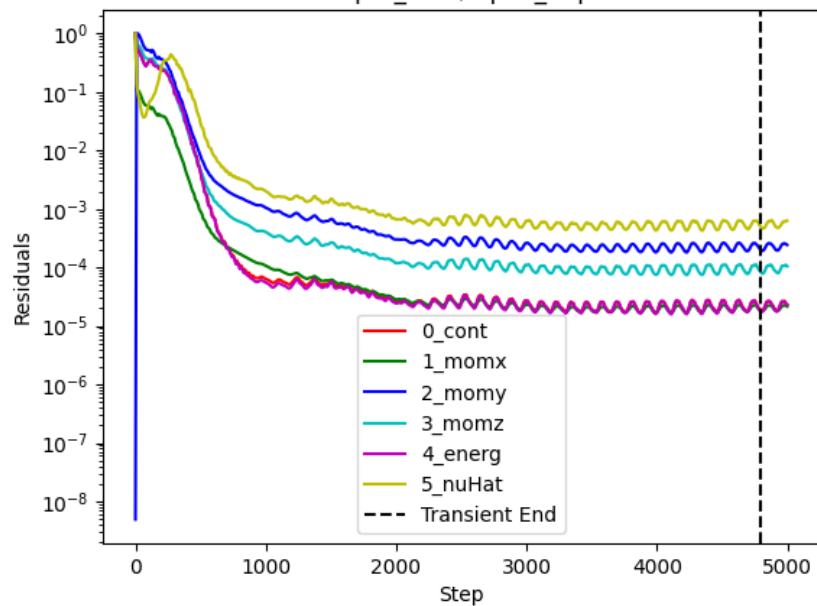
# PRELIMINARY RESULTS



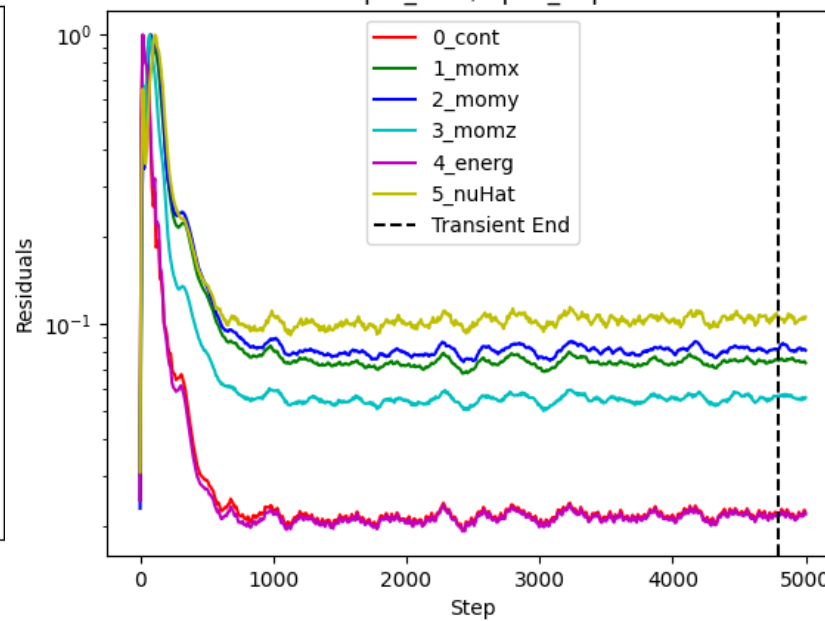
## RANS-SA[pB]

ied or  
any.

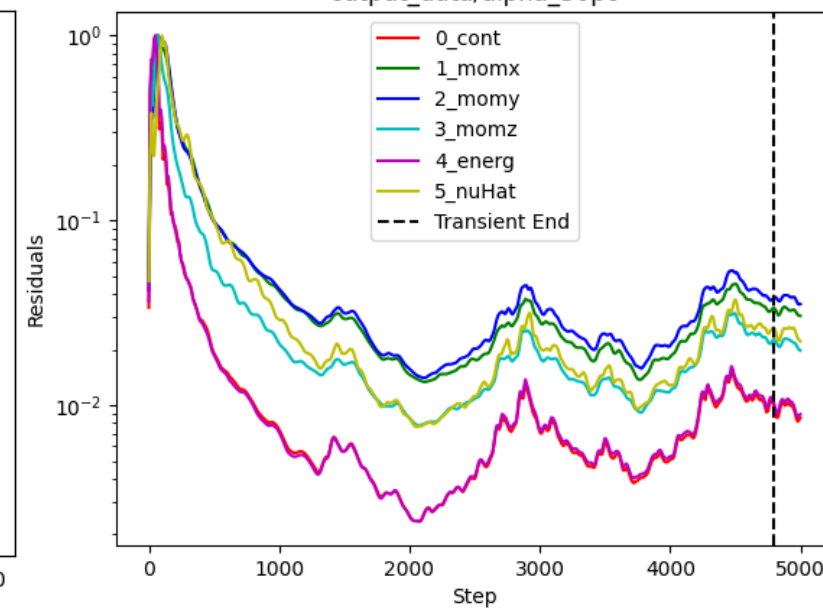
output\_data/alpha\_10p0



output\_data/alpha\_20p0



output\_data/alpha\_30p0

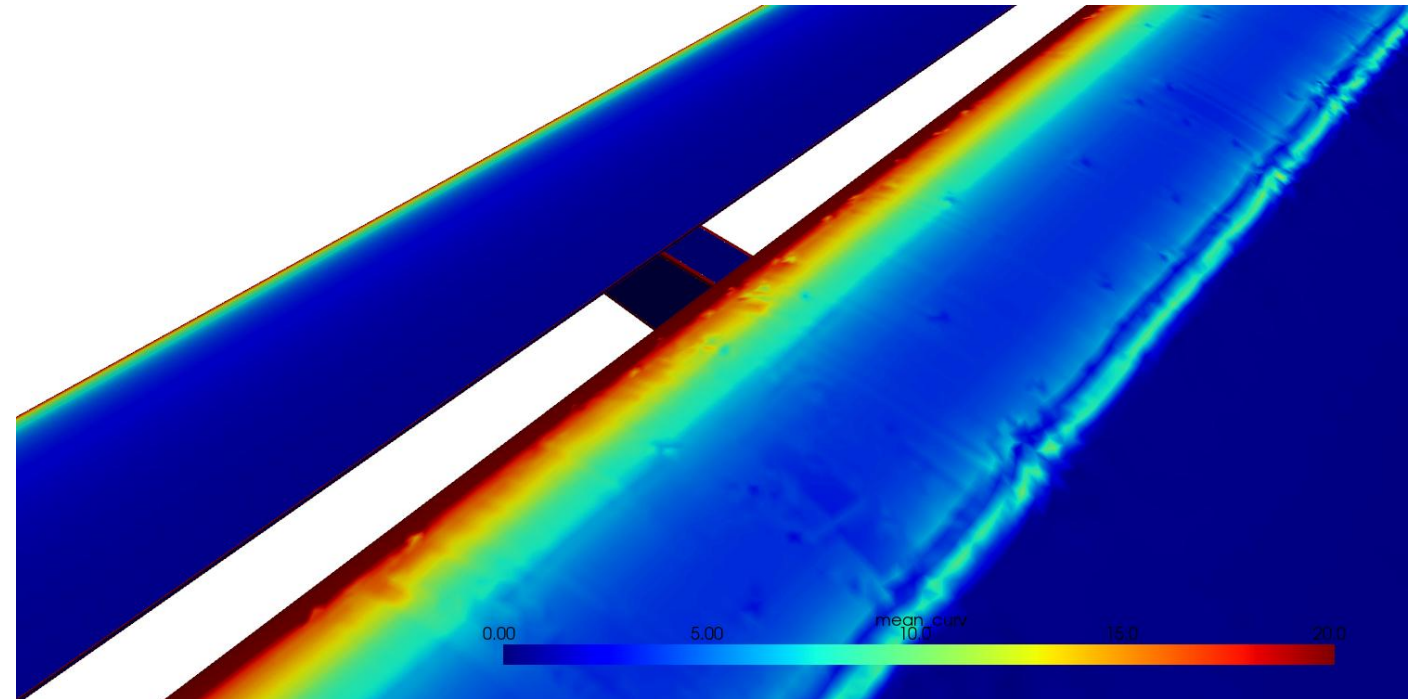


CC

# PRELIMINARY RESULTS



- Is the LE curvature jump in the CAD (highlighted by Yoimi) and also showed here in the surface mesh will affect separation?



CONFIDENTIAL INFORMATION / This information belongs to Embraer and cannot be used or reproduced without written permission from the Company.